

Game Scores

Custom Title

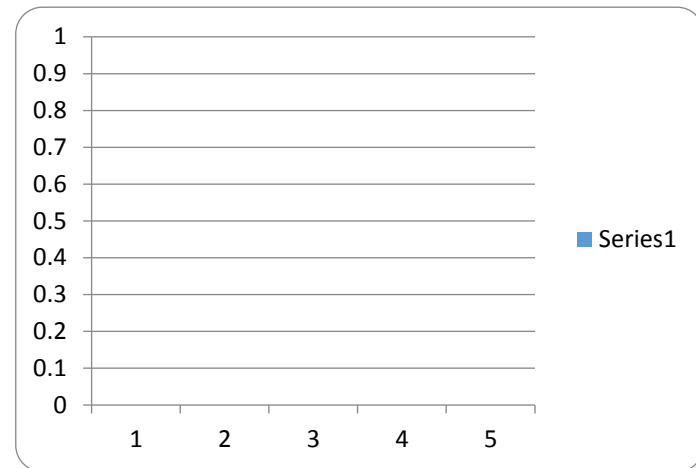
Presentation Name: Presentation1.pptx

Created on: 12/9/2014 11:12:46 AM

1) What team are you on?

- A. Red
- B. Yellow
- C. Blue
- D. Green
- E. Orange

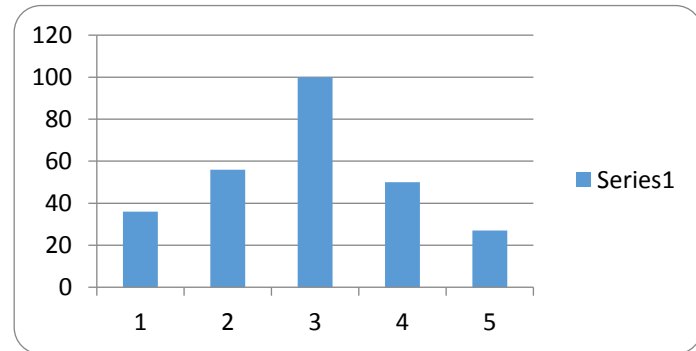
Team 1(Red) Score=	0
Team 2(Yellow) Score=	0
Team 3(Blue) Score=	0
Team 4(Green) Score=	0
Team 5(Orange) Score=	0



2) Al Capone had a below average IQ (around 90):

- A. True
- B. False

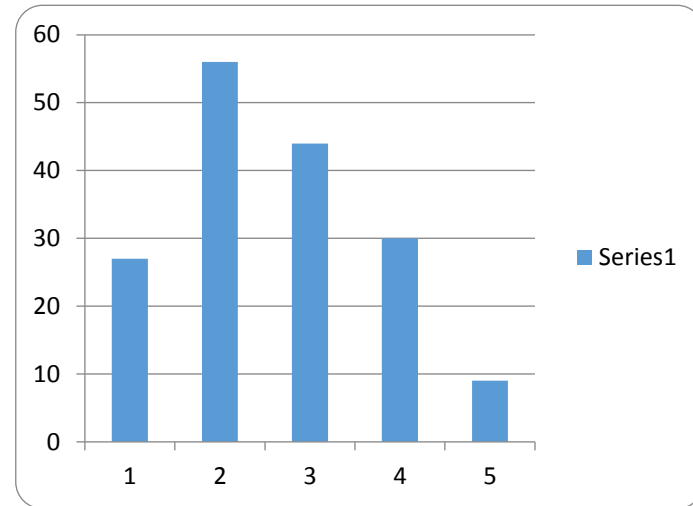
Team 1(Red) Score=	36
Team 2(Yellow) Score=	56
Team 3(Blue) Score=	100
Team 4(Green) Score=	50
Team 5(Orange) Score=	27



3) Select all that apply: Who were the inventors of Mickey Mouse?

- A. Clark Gable
- B. Ub Iwerks
- C. Walt Disney
- D. Shel Silverstein
- E. Louis Armstrong
- F. Grace Kelly

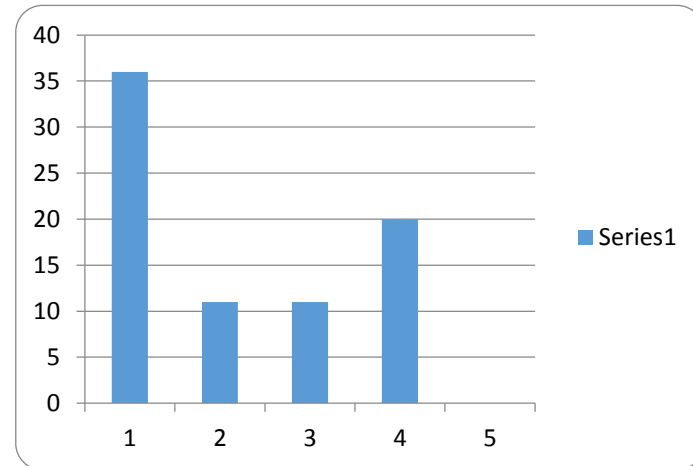
Team 1(Red) Score= 27
 Team 2(Yellow) Score= 56
 Team 3(Blue) Score= 44
 Team 4(Green) Score= 30
 Team 5(Orange) Score= 9



4) Orson Welles film Citizen Kane was based on what real character?

- A. William Randolph Hearst
- B. Philip Seymour Hoffman
- C. Billy Bob Thornton
- D. Ted Theodore Logan
- E. Bill S. Preston, Esq

Team 1(Red) Score= 36
 Team 2(Yellow) Score= 11
 Team 3(Blue) Score= 11
 Team 4(Green) Score= 20
 Team 5(Orange) Score= 0





Total Team Scores

Team 1(Red) Score=	99
Team 2(Yellow) Score=	123
Team 3(Blue) Score=	155
Team 4(Green) Score=	100
Team 5(Orange) Score=	36

Vertical line on the left side of the page.

Vertical line segment 1

Vertical line segment 2